

BOY 60 E VV

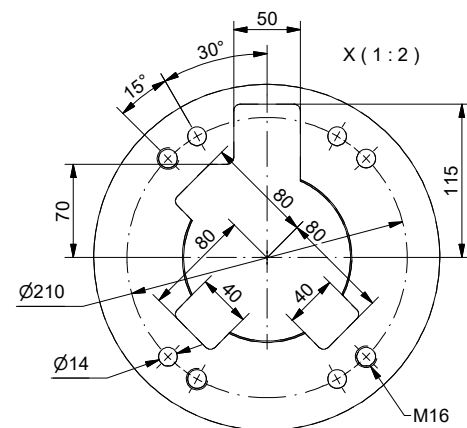
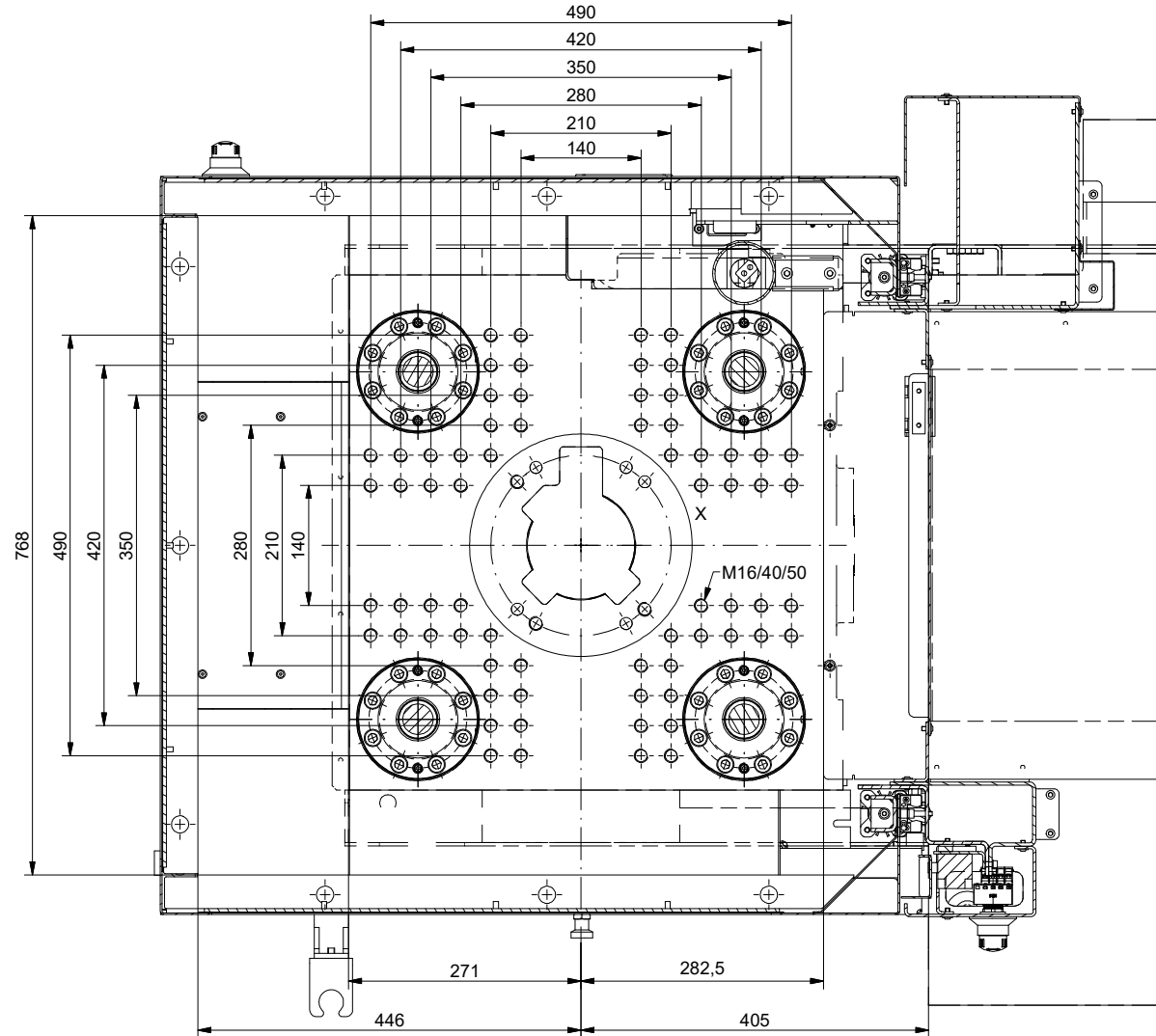
Einbaumaße / Platen Dimensions / Montage de moules / Montaje del molde



Spritzgiessautomaten

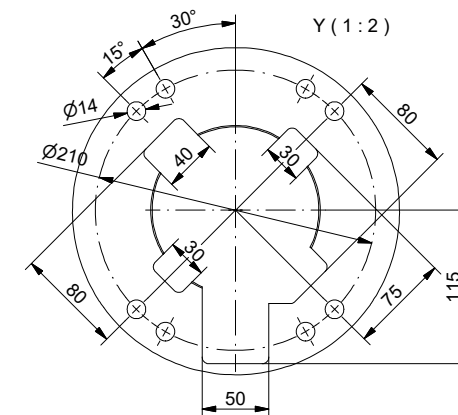
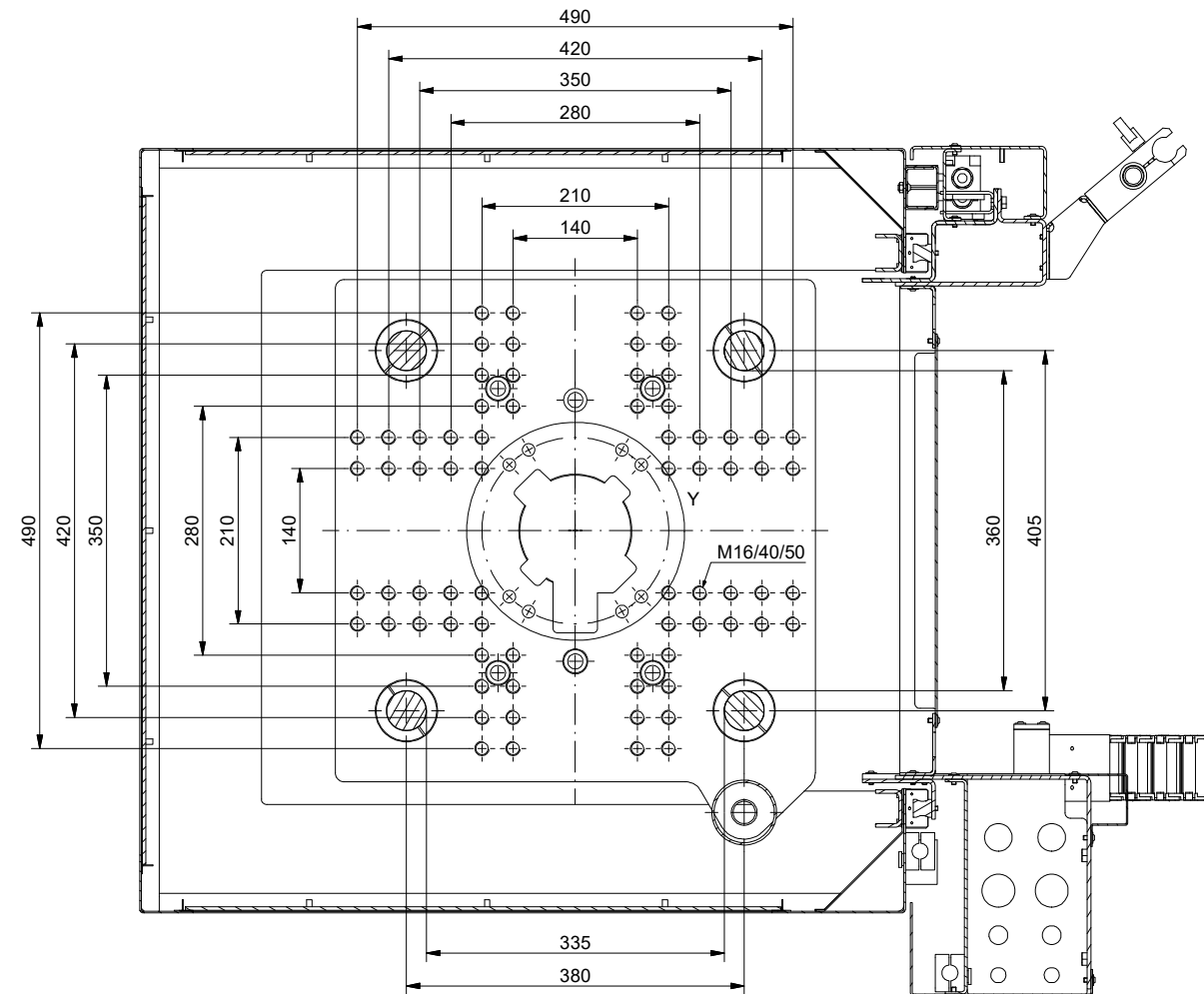
Schließseite

Closing side (Moving platen)
Cote fermeture
Lado de cierre
Lato di chiusura



Spritzseite

Injection side (Fixed platen)
Cote injection
Lado de inyeccion
Lato di iniezione

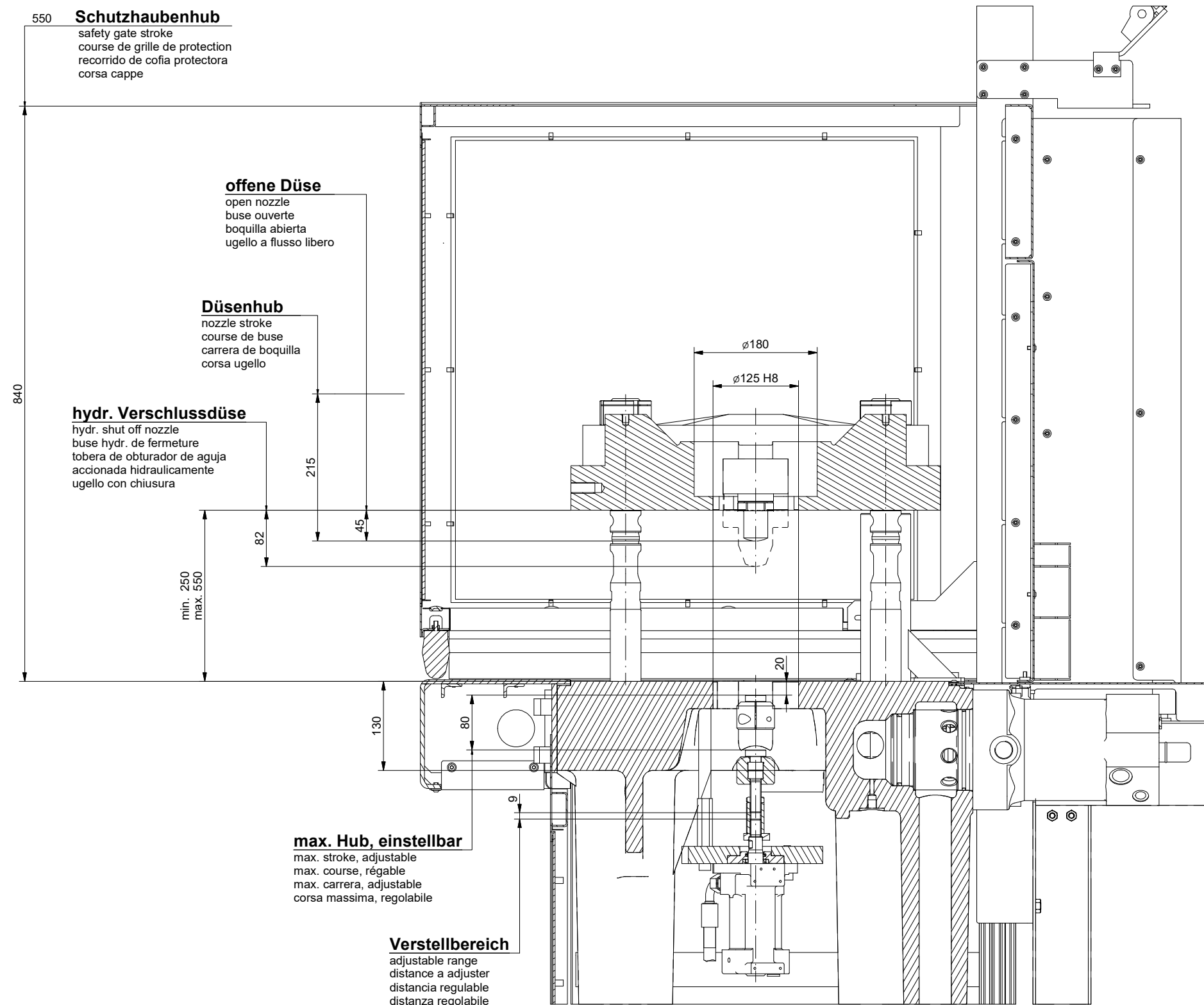


BOY 60 E VV

Einbaumaße / Platen Dimensions / Montage de moules / Montaje del molde



Spritzgiessautomaten



Dr. Boy GmbH & Co. KG
Industriegebiet Neustadt/Wied
Neschener Str. 6
53577 Neustadt-Fernthal
Germany

Telefon +49 / 2683 307-0
Telefax +49 / 2683 / 32771
E-Mail info@dr-boy.de
Internet www.dr-boy.de